

September

1964

Contact

*The Staff Magazine
of the
Merseyside and North Wales
Electricity Board*

MANWEB'S MILLIONTH CONSUMER (see page 171)





Left to right: Messrs. L. Rigby, R. M. Gravett, W. Humphries and T. R. Smith.

Golf Match

Head Office



Southport District

(Results reported in last month's Contact)



▲ Left to right: Messrs. W. Price, L. Hird, J. S. Ekbery, P. Falcon, H. Jones, T. Dutton, I. O. Bunday and W. R. Jones.

▼ Left to right: Messrs. E. Capp, K. Fitzpatrick, E. Brimelow, N. Wright, J. Pritchard, M. E. Evans, O. J. Hughes and L. T. Broughton.



▼ Left to right: Messrs. W. J. Thompson, F. J. Brown, P. Scott and C. Fletcher.

▼ Left to right: Messrs. J. Wright, W. Wallwork, P. Bregazzi and F. S. Boddington.





Contact

Edited by Keith Baldwin and published
monthly from the Board's Head Office,
Love Lane, Liverpool 3. NORTH 2681

THE STAFF MAGAZINE OF THE
MERSEYSIDE AND NORTH WALES
ELECTRICITY BOARD

VOL. 16 No. 9

SEPTEMBER 1964

EDITORIAL

The Million Milestone

WHEN Mr. and Mrs. Peter Keith Purdy and their three little boys moved into number 23 Seathwaite Crescent, Kirkby, recently, they became our millionth consumer. This important milestone in the story of electricity supply in Merseyside and North Wales has been reached after many years of development and effort, a process which has been intensified and accelerated with every year which has passed since MANWEB came into existence.

A few of the more vital figures are well worth repeating. Since 1948 our consumers have increased in number from 632,000 to 1,000,000. Consumption of electricity has more than tripled. We now have nearly 20,000 miles of mains and more than 25,000 transforming points, compared with 9,000 and 3,700 in 1948, while 85% of the farms in our Area now has mains electricity.

The Tower Hill Housing Estate, where the Purdy family's new home is located, is itself a monument to the progress of electricity supply. All the homes in this new development incorporate electric floor-warming, and the first batch of houses to be erected, featuring clean-cut roof-lines free of chimneys and TV aerials, contributing absolutely nothing to atmospheric pollution, are obviously the vanguard of a model community development.

Every member of the Board's staff who has played his or her part in making this development possible can feel proud of the progress which has been made.

On

other pages

Apprentice
Intake 172

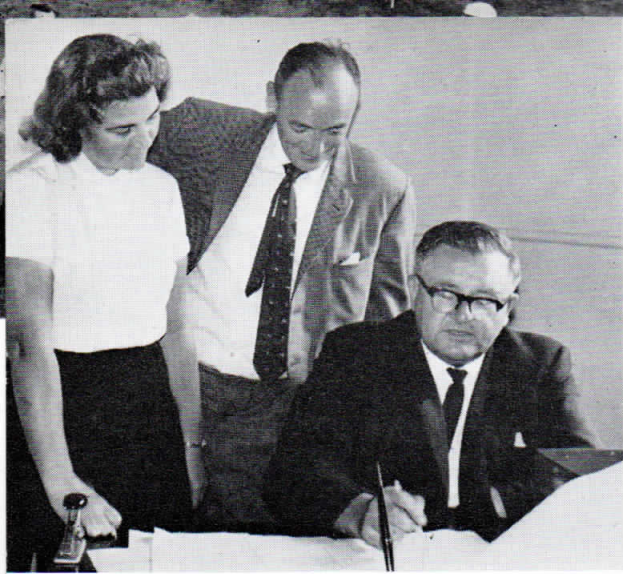
Focus on
North Wirral
District 174

Talking Notes 191

Photographic
Competition 192

OUR COVER PICTURE shows our Chairman, Mr. D. G. Dodds (*second left*) presenting the Board's gift of a refrigerator to Mr. and Mrs. K. Purdy, MANWEB's millionth consumer. Also in the picture is the Chairman of Kirkby U.D.C. (Councillor Albert Cook), with Board and Council officers.

Apprentice Intake 1964



▲ Fixing up the lodging accommodation for some of the new arrivals at Hoylake. *Left to right:* Mrs. D. M. Millington (clerk/typist), Mr. T. H. Dutton (Senior Assistant, Establishments) and Mr. R. Slack (Principal Assistant, Education and Training).

Monday, September 7th was the big day in the lives of the seventy-eight young men who arrived at the MANWEB Training Centre in Carr Lane, Hoylake, to commence their apprenticeships with the Board.



▲ The 23 apprentices from Area 1 pose for a picture in the main workshop. They are Messrs. S. J. Berwick, R. H. Black, D. G. Coulter, B. B. Coyne, P. Deane, R. Doughty, M. J. Dow, T. B. Dunne, P. F. Fletcher, A. C. Foster, K. Freeland, R. G. Gwilliams, T. M. Keenan, P. Kehoe, R. D. Lane, J. Monaghan, P. J. Mulholland, W. Nancolis, W. Nurse, P. Ramsey, A. Shaw, R. Squire and D. W. Thomas.



▲ On the stairs leading to the Drawing Office, these thirteen young men from Area 2 'watching the birdie' are Messrs. J. M. Adams, B. Cartwright, J. A. Darlington, J. Eccles, B. Hayes, A. D. Johnson, R. A. Kelly, J. D. Matzen, R. Pemberton, E. J. Pether, G. Sephton, M. G. Welch and J. Worth.



Introducing the MANWEB ladies from the canteen, Mrs. I. Bridle (left) and Mrs. E. King.

Three lucky lads, Messrs. R. J. Davies, K. Ross and R. L. Williams, from the Southernmost tip of the Board's Area, are soon 'at home', with Mrs. Earnden to keep a motherly eye on them.



▶ Nine more boys, this time from Area 3, get into the picture. They are Messrs. D. B. Armstrong, K. Baker, A. W. Boylan, G. T. Lacey, P. D. Moray, D. Nicklas, E. R. Price, N. T. Studdart and P. Williams.



And finally, a group of apprentices recruited from Area 4. Messrs. S. L. Allen, P. J. Boote, L. R. Camp, H. M. Cartwright, D. B. Edwards, M. K. Evans, I. S. Forbes, S. R. Gandy, J. E. Gaunt, D. J. Gilbert, G. M. Grocott, M. Hebenstreit, D. A. Hughes, G. R. Jarvis, D. Jones, D. G. Jones, P. W. Jones, T. L. Jones, D. N. Kendrick, N. D. Large, I. MacLean, J. M. Owen, A. C. Parry, D. W. Preece, G. D. Roberts, J. A. Stewart, R. H. Watkins, B. V. Williams, H. J. Williams and S. G. Williams.



FOCUS

ON

NORTH

WIRRAL

DISTRICT

SANDWICHED between the River Mersey and the River Dee is a strip of land which we in MANWEB refer to as our North Wirral District, one of the two Districts at present administered by Area 3.

This part of the Wirral Peninsula, with its busy and bustling docklands and shipyards in the east, its tranquil countryside in the centre and its quiet coastal resorts to the north and west covers an area of some 75 square miles.

When the Electricity Supply Industry was nationalised in 1948, MANWEB took over three

undertakings which had been supplying electricity to consumers on the Peninsula. These were the electricity departments of Birkenhead Corporation, Wallasey Corporation and the Hoylake and West Kirby U.D.C.

Nearly 75 years ago Birkenhead Corporation became one of the first local authorities in the country to obtain statutory powers to set up a public electricity supply undertaking. In 1896 the generating station, situated between Bentinck Street and Craven Street was completed. About this time, a booklet was issued by the Corporation entitled "*Introductory Observations in regard to the Birkenhead Electric Lighting Installation*", which set out to tell the consumers that electricity mains cable would be laid in "Hamilton Street, Grange Road, Charing Cross, Market Street, Market Place South, Argyle Street and Hamilton Square."

The charge for electrical energy was set out as follows—"For any amount up to twenty units 13s. 4d. per quarter, and for each unit over twenty units, 8d". The booklet then detailed the advantages in favour of 'illumination by electricity' in the following manner:—Brilliancy; cleanliness by reason of their being no impurities or noxious gases thrown off; not injurious to health; not injurious to walls, ceilings, books, stock, fruits, flowers, perishable stuff, etc.; even temperature, no appreciable heat being generated by the light; freedom from waste and no leakage or loss of energy; diminished risk of fire and the absence of explosions. (*Come to*

The men who lead. *Left to right, standing:* Messrs. A. Kaye (1st assistant District Engineer), J. E. Evans (District Senior Clerk), G. Grady and J. Anwyl (1st assistant District Commercial Engineers). *Seated:* Messrs. R. H. Morley (District Engineer) and G. A. White (District Commercial Engineer).



think of it, the same advantages apply equally well today.)

So, electricity came to Birkenhead, with a power station operating with a capacity of 150 kilowatts. On completion of the first year's working 71,243 units were sold to 94 consumers.

At the turn of the century supply was extended to the Parishes of Bidston and Noctorum, and four years later to Prenton and Upton. Also in 1900, the Tramways Committee built a generating station at Craven Street to supply their vehicles. This station was adjacent to the Bentinck Street generating station and in 1910 the two stations were augmented under the Electricity Committee and were worked together as a joint generating station to supply electricity for all purposes.

Additions to the plant and extensions to the mains were made as demand increased. In 1915, the total capacity of the generating plant, including a small station in New Chester Road, amounted to 4,825 kilowatts. Five years later, the maximum demand reached 4,246 kilowatts which left a totally inadequate margin of spare plant in case of breakdown.

Confident of a great future for electricity, the Electricity Committee embarked on a bold policy of providing mains and plant for supplying every district within the Borough, including the large dock area. They had been refused permission to extend their own generating station capacity so they decided to augment the supply by taking a bulk supply from Wallasey. A high tension main was laid between Bentinck Street and the Wallasey generating station in Limekiln Lane, through the dock passage at Duke Street, a new substation being erected en route at Marshall Street. In addition to this work, a ring main, working at 6,600 volts, was laid round the Borough, to supply the town itself and in readiness for extensions to outlying districts.

In 1926, the Service Centre in Grange Road West was opened, and twelve months later the area of supply covered nearly 70 square miles and included the Borough of Birkenhead, part of Bebington and Bromborough Urban District, Wirral Rural District, Neston and Parkgate Urban Districts, part of Ellesmere Port Urban District and part of Chester Rural District.

When the undertaking became part of MANWEB in 1948, they were supplying about 182 million units to 54,000 consumers. At this time some 24,000 premises were on D.C. supply, all of which have since been changed by the Board to alternating current.

WALLASEY

The supply of electricity for Wallasey was first considered by the Council in December 1895,

and by January 1897, the generating station in Seaview Road was formally opened. The plant comprised of two 75 kilowatt single-phase generators and the mains network totalled eleven miles of high and low tension cable. Supply was given to consumers at 100-Volts.

At the end of the first full year's working, 91,570 units were sold to 98 consumers at an average price of just over 5d. per unit.

As the demand grew various additions to the plant were made, and in 1900 new direct current plant supplied the new electric tramway system. By 1912, it had become obvious that the Seaview Road site was not large enough to permit further development, so in 1914 work started on a new station at the junction of Limekiln Lane and Dock Road. This site was chosen because of its proximity to the docks, where ample cooling water was available, and also because of the excellent railway facilities. The first world war delayed bringing the full capacity of the new station into commission until 1917, and a year later the Seaview Road station was closed down.

In 1934, new offices and showrooms were opened in Wallasey Road—the same building stands today as the Board's Electricity Service Centre. The well-equipped demonstration theatre has shown the 'House Full' card on many occasions during the past 30 years, and many members of the Board's staff have attended courses at the Sales Training School in the same building or spoken at the Public Speaking Competition held there each year.

Just after the opening of the new showrooms, a branch of Electrical Association for Women was formed under the chairmanship of Mrs. B. T. Hawkins, wife of the then Borough Electrical Engineer. Like the Wallasey Branch of the E.A.W., both Mr. and Mrs. Hawkins are still very active today.

By 1948, after fifty years of supplying electricity to the Borough, approximately 350 miles of main were then in use to bring the benefits of electricity to more than 29,000 consumers.

HOYLAKE AND WEST KIRBY

The Hoylake and West Kirby Urban District Council obtained an order to supply electricity in the Urban District in 1897 and a generating station was built at Carr Lane, Hoylake (now the Board's Training Centre).

The power station contained three 75 kW, 2,300-Volt single-phase Cronton disc type alternators coupled to Bellis vertical compound engines and steam was generated by three Lancashire boilers at a pressure of 160 lbs. per square inch. The supply of electricity commenced

Continued on page 190



◀ The ladies of the "pool". *Left to right:* Mrs. M. Davies, Mrs. S. Jackson, Miss J. Lewis, Miss A. Cain (supervisor) and Mrs. M. Aird.



All smiles from Mrs. E. Godwin (telephone operator) and Miss D. Hughes (clerk.) ▶



"We're usually out and about" so say, *left to right:* Messrs. C. E. Male (assistant consumers' engineer), A. Acton (student apprentice), D. Willacy (consumers' engineer) and F. Bird (assistant consumers' engineer).

'Contact' at Craven



▶ Always welcome is Mrs. I. Williams with the cup that cheers.

◀ Admin. staff hard at it! *Left to right:* Mrs. M. E. Cross (assistant), Mr. B. I. Weare (senior assistant), Miss M. Carr (clerk) and Mr. E. Morgan (assistant).



◀ Engineering personnel. *Left to right:* Messrs. H. Cave (assistant section engineer), P. Mahon (mains foreman), P. Lowry (assistant section engineer), J. E. Foster (section engineer), R. Woodbridge (section engineer), D. Lloyd (assistant section engineer), D. Stevenson (assistant section engineer), D. Earle (assistant section engineer) and L. Murphy (mains foreman).

▶ A happy group in the Drawing Office. *Left to right:* Mr. D. Hoey (draughtsman), Mrs. J. Humphreys (tracer), Mrs. E. J. Olivares (tracer), Messrs. F. Thomas (draughtsman), G. Newton (draughtsman), G. Wraig (drawing office assistant), H. Boyce (draughtsman), R. T. Taylor (chief draughtsman) and Miss I. Watson (tracer).



▶ Admin. staff again. *Left to right; back row:* Mrs. H. Turner (clerk), Mrs. P. Irvine (clerk) and Mr. K. Cambridge (assistant). *Front row:* Mr. N. Hadwin (clerk), Mr. W. Ford (clerk) and Mrs. M. Lemon (clerk).



Camera Street

◀ "I'll go here, you go there." Mr. J. Dowker (assistant consumers' engineer) looks on while Mr. R. G. Davies (consumers' engineer) puts pen to paper.



▶ "Hurry up, we are busy" . . . so say these commercial men! *Left to right:* Messrs. C. Garner (sales representative), T. Mason (sales representative), R. Neil (senior sales representative), G. Pitman (sales representative) and L. G. Egerton (sales representative).



▶ North Wirral consumers' records section. *Left to right; back row:* Messrs. G. Stephens, F. C. Gordon, J. Triplett, E. Meredith, K. Jones, J. H. Johnston and J. Bradley. *Front row:* Mrs. A. Davies, Mrs. K. Doran, Miss J. Parry, Mrs. D. Salter, Miss M. McCann, Mrs. E. Haslett and Mrs. B. Cambridge.





Pay night for these members of the District Contracting staff. *Left to right, back row:* Messrs. R. Bennett, G. Ezard, A. Button, S. Hooper (electricians), F. Letts (assembler), G. Roylance (electrician), H. Flowers (leading hand), K. Murray (electrician), T. Swift (street lighting attendant), J. Allen, J. Clough (electricians), A. Nichols (foreman), N. Williams, K. Everett (electricians), P. Baker (apprentice), C. Jones, C. Robertson (electricians), P. Johnson, S. Redfern (apprentices), J. Holden, E. Charnock (electricians), J. Ollman (apprentice), R. Brookes (foreman) and L. Griffon (plumber). *Middle row:* Messrs. G. Hogarth, A. Smith, J. Rigby, T. Ellwood (electricians), P. Mearns (apprentice), F. Holme (driver) and D. Leatham (apprentice). *Seated:* Messrs. L. Woolley, G. Smith (electricians), D. Kendrick, B. Manning, J. Chatwin, R. Skinner, M. Tittle (apprentices), H. Hyland (electrician), G. Jones (chargehand), N. Lewis (electrician) and F. Jeffries (contracting engineer). *Front row:* Messrs. N. Davies (electrician), A. Roberts (apprentice) and B. Bamber (electrician).

Contracting

Big smiles for the cameraman from this group of men at the end of their day's work. *Left to right, standing:* Messrs. W. Williams (installation inspector), J. V. Collins (installation inspection engineer), I. Roberts, J. Ford (apprentices), L. Stoves, R. Sutherland, J. Biggs (installation inspectors), A. Beale (apprentice), M. McDonnell (chargehand), L. Taylor, L. Smith (installation inspectors), W. Perry (chargehand), B. Connelly (meter fixer), F. Smith (installation inspector), P. Wise, H. Holmes, F. Murphy and G. Ashley (meter fixers). *Seated:* Messrs. J. Anyon, W. Berry, E. Roberts (installation inspectors), A. E. Davies (electrician) and A. Hamilton (meter fixer).



Meter Readers

Left to right, standing: Messrs. W. Lee and J. Dean. Seated: Messrs. G. Gillett, J. Crosby and W. Crossley, all meter readers.



▲ Left to right, standing: Messrs. E. W. Jackson, A. Caldwell, W. Barr (clerk), H. Pyke, G. McGowan, C. Banson, O. Humphreys, E. Kingsbury, K. Corfield (assistant), G. Fletcher (foreman), D. Roberts (clerk) and L. Ellis (charge-hand). Seated: Messrs. W. Doyle, J. Thelwell, A. Gillett and T. Hardy. All meter reader/collectors unless otherwise designated.

and Electrical Fitters

Left to right, standing: Messrs. H. Darlington, P. Murphy, J. Smith (elec. fitter's mates), F. Kelly (electrician), L. Bibby (elec. fitter's mate), D. Gant, A. Pharaoh (elec. fitters), R. Benson (elec. fitter's mate) and G. Willan (elec. fitter). Kneeling: Messrs. J. Davies (elec. fitter's mate), R. Johnson (driver) R. Povall (elec. fitter's mate), K. G. Lee (elec. fitter).

Working at a new substation in Upton. Left to right: Messrs. G. J. Ebbs (elec. fitter), R. Griffiths (elec. fitter's mate) and D. Benson (apprentice).



Engineering Staff

working on
system
re-inforcement
and
providing
new supplies



Diggers, but not Aussies! *Left to right:* Messrs. J. Cornes, M. Hunt, D. Fitch, D. Thompson, D. McGrath, W. McCormick and N. Dutton.



Take your pick! *Left to right:* Messrs. A. Silcock, J. Walker, V. Marsden, R. Booth and H. Myers.



Excavating a cable trench at Roby. *Left to right:* Messrs. W. Kendrick, E. Sheen, P. Jones, J. Martland, J. Milligan, A. Fitzpatrick and R. Phipps.



Breaking from work on a substation to pose for our cameraman we see, *left to right:* Messrs. F. Tarrant (joiner's mate), L. Jones (joiner) and R. Smith (labourer).



Calling at another new substation sited near to the Birkenhead High School for Girls we found, *left to right:* Messrs. F. Canner (joiner), A. Kelly (labourer), D. Blackburn (joiner's mate), F. Wheadon (joiner), R. Letts (joiner's mate), J. Egan (labourer).



Wallasey Cable Gang in action. *Left to right:* Messrs. J. Talbot, T. Murphy, A. Dafarno, T. Davies, W. Pemberton, J. McManamon, J. Podmore, A. Dean, R. Lorraine and H. Hatton (ganger).

Birkenhead Cable Gang. *Left to right:* Messrs. T. Burns, C. Tolcher, J. Kilbride, J. Glover, H. Rowlands, A. Armstrong (ganger), J. Forbes, R. Royal, J. Thompson, T. Hughes and L. Curran.



By the hole in the road! *Left to right:* Messrs. P. Hardman (labourer), P. J. Coughlan (jointer), G. Clark (jointer's mate), O. Fardoe (labourer), R. D. Bordley (apprentice) and J. Blackburn (jointer).



Bromborough Gang. *Left to right:* Messrs. L. Dutton, T. Hughes, L. Jeffries, J. Ryan, R. Griffiths, G. Colley (ganger), T. Evans, P. Taylor, W. Horton, T. Corkhill and D. Thompson.





At Craven Street. *Left to right:* Messrs. D. Burnett, R. Hyde (apprentices), J. Crawford (labourer), J. Law (senior storekeeper), N. Richards (labourer), T. Blythe (storekeeper), G. Carrington (assistant storekeeper), R. Jackson (stores clerk), and A. Hall (storekeeper).



◀ Still at Craven Street Stores, but this quartette just happened to be passing at the time. *Left to right:* Messrs. A. Kennedy (meter tester), G. Hanson (labourer), R. Sands (meter tester) and L. Beaney (labourer).

In the Stores



◀ Over to Wallasey where the fork-lift truck is put to good use, supporting, *left to right, back row:* Messrs. H. Anderson and J. Eastwood (assistant storekeepers); *front row:* Messrs. B. Hardcastle (labourer), J. Hughes (stores clerk) and F. Robinson (assistant storekeeper).

And now to Cleveland Street. *Left to right, back row:* Messrs. W. Beavan (labourer), H. Tyers (storekeeper), B. Williams (storekeeper), R. Smith (stores clerk). *Front row:* Messrs. F. Coughlin (jointer's mate)—on detached duty?—W. Byrne (assistant storekeeper), G. E. Ball (labourer) and D. M. Burrows (apprentice).





Mr. E. Lennard (sales representative), *left*, and Mr. I. Ince (senior Service Centre assistant).



HESWALL Service Centre
178 Telegraph Road

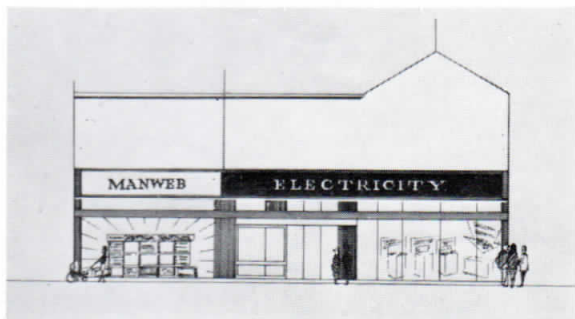
Round the North Wirral Electricity Service Centres

BIRKENHEAD

Pay here! Mrs. J. Williams (assistant cashier) and Mr. H. Gascoigne (senior assistant cashier).



The shape of things to come at Grange Road West, Birkenhead. This artist's impression by Gordon Carew, shows what the new Service Centre should look like when work is completed very soon.



Les girls at Grange Road West. *Left to right*: Mrs. E. Radcliffe, Miss A. Charters, Mrs. M. Martin, Mrs. E. Dover and Miss D. Rushton, all Service Centre assistants.

Round the 'Dem. table' at Birkenhead. *Left to right*: Mr. J. Casson (senior Service Centre assistant), Mr. R. Meacock (stores clerk), Miss D. Birchall, Mrs. I. Cliffe (Service Centre assistants), Miss C. Stewart (demonstrator), Miss S. Roycroft (trainee demonstrator) and Mr. K. Williams (Service Centre assistant).





◀ All ready for the customers at Wallasey. *Left to right:* Mr. J. Martin (Service Centre supervisor), Miss L. Moran, Miss I. Mutch and Mrs. M. Pritchard (Service Centre assistants and Mr. D. Starnes (senior Service Centre assistant).

▶ **WALLASEY Service Centre**
in Wallasey Road



◀ Another happy group at Wallasey Road. *Left to right:* Messrs. P. Hunt (Service Centre assistant) and D. Butterfield (cashier), Miss J. Wallace (Service Centre assistant), Messrs. L. Evans (trainee Service Centre assistant) and R. Hardwick (Service Centre assistant).

▶ **and**
WEST KIRBY Service Centre
at 9 Banks Road



◀ At your service at West Kirby. *Left to right:* Mrs. V. Ford (senior Service Centre assistant), Mr. W. Langley (driver)—*just calling!*—Mr. L. Hartley (stock control clerk) and Miss J. Stoves (Service Centre assistant).



MORETON
Service Centre
267 Hoylake Road



At Moreton: Mrs. C. Kneale (cleaner), Mr. H. Litherland (senior Service Centre assistant) and Miss N. Bland (Service Centre assistant).



At Upton. Mr. J. Owen (senior Service Centre assistant) and Miss P. Power (Service Centre assistant).



UPTON
Service Centre
25 Arrowe Park Road

NEW FERRY
Service Centre
87 New Chester Road



At New Ferry. Mr. T. Palombello (Service Centre assistant) and Mr. G. R. Hill (senior Service Centre assistant).

HOYLAKE
Service Centre
5 Albert Road



And at Hoylake. Mr. D. Ross (senior Service Centre assistant) and Miss J. Dodd (Service Centre assistant).





Employees photographed in the Domestic Appliance Workshops. *Left to right:* Messrs. A. Fethney, S. Kempton, G. Black (electricians), L. Ronalds (labourer), F. Hughes (assembler), R. Hancox (apprentice), H. Greasley, H. Reeves (assemblers), D. Graves (electrician), R. Hatton and J. Hartley (assemblers).



Transport staff. *Left to right:* Messrs. D. Jones, P. Dohemy, B. Benson, A. Potts, J. Foreman (chargehand) and G. Holland.

Wallasey Staff at Seaview Road



Service staff. *Left to right, back row:* Messrs. P. Geekie (assembler), J. Roberts (apprentice), J. Blythe (electrician), W. Cierpicki (labourer), A. Langley (electrician), A. Hughes (apprentice), H. N. Jones, J. Prescott, B. O'Grady (electricians), D. Cooley (chargehand), M. Grisenthwaite, G. Black, D. Grave, R. Webster, G. Harris, L. White and H. Edmonds (electricians). *Front row:* Messrs. T. Conroy (labourer), W. Hatton (apprentice), A. Hardman (driver), C. Bratt (electrician), D. Neill (driver), R. Keenan (assembler), R. Smith and E. Hough (electricians).



An early morning shot of a group of contracting staff. *Left to right, back row:* Messrs. J. Wood, A. Morris (electricians), J. Cadogan (apprentice), B. Bradley, R. Cook (electricians), L. Rogers (apprentice), J. Kelly (electrician's mate) and K. Murray (electrician). *Front row:* Messrs. A. Davies, J. Hughes (electricians), W. Thrift (foreman electrician), W. Mongey (electrician), P. Wearing (plumber) and J. Tomlinson (electrician).



By the clock, left to right: Messrs. R. White (electrician), A. Leary (mess room attendant) and F. Casey (time-keeper).



Mrs. A. Williams (cleaner). The only female at Seaview Road depot.

Members of the Wallasey mains gang. Left to right, back row: Messrs. T. Robertson, D. Jones, K. Winter, A. Webster, A. Williams, W. Gilfoyle, H. Smith, W. Povall, A. Robertson, J. Foreman, R. Holden and J. Devon. Middle row: Messrs. L. Barton, E. Smiles, A. Robertson (foreman), W. Egan, R. Rodway, B. Benson, M. Maddon and G. Croxen. Front row: Messrs. A. Doyle, S. Rowe, E. Wycherley, E. Wilcocks, W. Dean and W. Moore. ▶



Another group of staff in the Domestic Appliance Workshops. Left to right: Messrs. G. Woods (electrician), D. Cooley (chargehand), E. Harris, W. Strong (electricians), J. Henry (assembler), J. L. McCormack, E. Phillips (clerks), L. Smith (electrician), G. Hodgson (chargehand), W. Cierpicki (labourer) and T. Davies (assembler).



Installation Inspection staff. Left to right: Messrs. J. Watson (inspector), A. Parsons (driver), J. Shaughnessy (inspector), G. Davies (meter fixer), G. Halliday, A. Lawson and V. Henri (inspectors).





A 'snap' taken in the joiners' shop at Craven Street, showing, *left to right*: Messrs. E. Allen (joiner), L. Parrington (joiner's mate), H. Marcroft (joiner), H. Ezard (joiner), E. Frost (joiner's mate) and R. Parrington (labourer).



In the Engineering Workshops. *Left to right*: Messrs. A. Taylor (mech. fitter), R. McWilliams (mech. fitter's mate), E. Charnock (electrician), J. Roberts (mech. fitter), E. Carsno (mech. fitter's mate), J. Rogers (chargehand mech. fitter) and R. W. Bellis (workshops and buildings engineer).



Ready to start work as the office staff finish for the day—the Painting Department about to brighten up the District Offices. *Left to right*: Messrs. S. Whiley (foreman), J. Skillen (chargehand), W. Stevans, E. M. Welsh, V. Fethney, D. Martindale, H. Wharton, A. Harris, H. Nulty, A. Idle and N. Chisholm.

A last look around



“Stand at ease!”

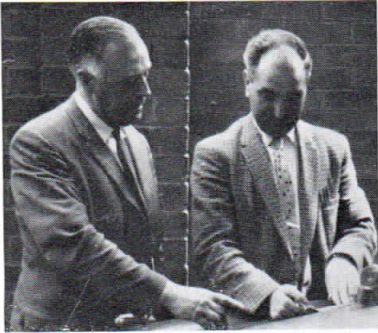
Members of the District Building Section at Meols 33kV. substation. *Left to right, back row*: Messrs. E. Frost (joiner's mate), F. Davies (bricklayer), H. Birkett (labourer), W. Farrell (joiner), E. Lloyd, M. Gorman (bricklayer's mates) and A. Thompson (bricklayer). *Front row*: Messrs. G. Ross, M. Bowman, T. Roberts (bricklayers), C. McTavish (driver), J. Todd (flagger), J. Ball, S. Howard (bricklayer's mates), R. Barr (flagger's mate) and M. Nolan (dumper driver).



"What's this in Contact?" *Left to right:* Messrs. J. Sutherland (fitter), W. Quinn (joiner) and J. Cartwright (labourer).



Transport staff at Cleveland Street. *Left to right:* Messrs. R. Clegg (driver), W. Stafford (foreman), L. Lindfield (mech. fitter), M. Upton (in crane cab), C. McCavish, S. Meadows (drivers), R. M. Robinson and A. Robinson (mech. fitters).



"Let's try it this way." *Left to right:* Mr. J. V. Carroll (assistant section engineer) and Mr. J. Butterworth (joiner).



Behind the scenes at Wallasey Road. *Left to right, standing:* Messrs. H. Godson (clerk), J. Mills (foreman, meter reading), J. Hazellhurst (labourer), A. Morris (storekeeper) and F. Bryant (cashier). *Seated is* Mrs. N. Wilcox (cleaner).



"Did you say cheese?" Mr. C. Jones (joiner) *left*, and Mr. J. Diamond (labourer) at Cleveland Street.



On duty at Bentinck Street substation. *Left:* Mr. R. Dodd (switchboard attendant) with Mr. H. Jones (substation attendant).

At Craven Street on pay day, these retired employees were 'caught by the camera'. Messrs. E. Bagshaw, A. Bailey, J. H. Davies, J. Doherty, J. Evans, W. Geary, I. Hunt, T. Jones, R. J. Owens, C. Shaw and J. Williams. Also in the group are Messrs. W. Clements, B. Dowden and O. Jones (watchmen).





— AREA METER TEST SECTION —

Testing and calibrating meters. *Left to right:* Messrs. H. Calveley, E. J. Beck, A. W. Fisher, A. Clarke and A. Jones.

Poly-phase testing. *Left to right:* Messrs. L. Wakefield, D. H. Robertson, S. Wilson and E. J. Beck.

(continued from page 175)

in May 1901, and as electricity sales increased, additional generating sets were added. In 1930 a bulk supply was taken from the Birkenhead Corporation. Four years later the Central Electricity Board took over this supply and provided an additional supply at 33kV and the generating station was then finally closed down.

The original system supply was single-phase, 2,300-Volt 50 cycles and was transformed down to 230-Volt at the various kiosk and underground transformer pits.

In 1934 when the Urban District was extended, supply was given to Greasby, Caldy, Grange, Frankby and Newton areas and an 11-kV three-phase system was laid down. In 1938 a ripple control plant was installed for the automatic switching of the street lighting and peak load control on domestic water heaters. This was the second plant of its kind to be installed in

this country and its operation resulted in considerable savings in maximum demand charges to the Central Electricity Board.

When the undertaking was transferred to the Board in 1948, unit sales were approximately 21 million to a little under 10,000 consumers: the average domestic consumption per head of population—800 units—being amongst the highest in the country.

Today the routine work of looking after the North Wirral District's 120,000 consumers is carried out by 823 employees who operate from the main office at Craven Street, Birkenhead, from the depot in Cleveland Street and from the District's eight Electricity Service Centres. Proposals have recently been approved for a new depot and block of offices to be built on a site at Price Street/Corporation Road to centralise all members of the District staff. It is expected that work will commence on this project early in 1965.

— AREA METER TEST SECTION —

(Left) Heads down in the meter records office. *Left to right:* Messrs. R. C. Parker, A. R. Griffiths and K. Donegan. *(Below)* In the relay test section are, *left to right:* Messrs. H. M. Scott (2nd assistant engineer), J. W. Jump (3rd assistant engineer), J. H. Woodhouse (4th assistant engineer) and B. Shield (meter tester/repairer). *(Right)* Foreman H. T. Williams talks to Mr. W. R. Smith while Messrs. E. C. G. Owen and M. Armstrong inspect meter jewels.



Talking Notes

SERVING YOUTH

MAKING a useful contribution to the community life of his locality is **Mr. Eric Sloan**, substation inspector on the Board's North Wirral District Staff.

Mr. Sloan, who lives in Moreton, Wirral, has been running his own Youth Club since 1958, and the Club's first football team has won eight cup and league competitions during that time. Last year they were champions of the third division of the Birkenhead and Bebington Football League, and were the losing Cup Finalists.

The Club's reserve team won the league's fourth division cup and finished in second place in the league table.

Mr. Sloan serves on several Youth Committees, including the Wirral



Mr. E. Sloan

F.A. Council, as Wallasey Junior Football League Representative, the Wallasey Junior Football League, the Bebington and Birkenhead Football League and the Wallasey Standing Youth Leaders' Council. Mr. Sloan plays an active role in the MANWEB Sports and Social Club, and is at present aiming to see a MANWEB North Wirral Football League side in operation.

The Kiss of Life

Prompt action by chargehand labourer **Mr. Albert Kontzle**, a member of Liverpool Central District staff, may well have saved the life of a twelve-months-old baby girl recently.

On the afternoon of Tuesday August 11th, Mr. Kontzle was working in Adkin Street, Liverpool, when he was called by members of the cable-laying gang to a house in the street.

There he found that twelve-months-old Eileen Allen, of 18 Claude Road, Liverpool, had fallen down some stairs while on a visit to the home of an aunt. The child seemed limp and lifeless, and no pulse could be detected.

Mr. Kontzle carried out mouth-to-mouth artificial respiration, and Eileen responded and began to recover. An ambulance was called and she was taken to Stanley Hospital. Later Eileen was discharged, apparently none the worse for her experience.

Mr. Kontzle, who lives at 31 Royden Street, Liverpool, is 59. He began work with the Board in 1945.

Proud Pop

A very proud father at the moment is **Mr. F. J. Bird**, who works as an assistant consumers' engineer in the North Wirral District. The reason is obvious when you look at the achievements of his seventeen-year-old daughter, **Carol**, who has just completed an

outstanding period as a junior badminton player.

During the past season, Carol has won nine out of a possible twelve Open English Championships including the English Open Mixed Doubles Championship.



Miss Carol Bird

Each year for the past three years she has won the Cheshire Junior Singles Championship, the Birkenhead League Triple Crown and the Cheshire Junior Doubles and Mixed Doubles. In senior events she is the present holder of the Cheshire Restricted Singles Championship for two successive years, and English Open Bank Champion, singles and ladies' doubles.

Carol started playing at the age of eleven and won her first competition a year later. She is a regular player for Cheshire County and Charing Cross Methodist Badminton Club playing in the First Division of the Birkenhead League.

Now the holder of eighteen silver cups and medals, she has been guided and coached by her father who is also a badminton coach for Birkenhead Corporation, captain and chairman of the Charing Cross

Club and vice-president of the Birkenhead League.

Mr. Bird's other activities have included Special Constable (Queen's Medal) and youth club leader.

Still in the Swim

A few months ago we published in *Contact* an article by **Mr. Robert William Keating**, a clerk in Warrington District Office, in which he described the joys and tribulations of being a long-distance swimmer. Bob is still as enthusiastic as ever about his gruelling hobby, and has recently completed two more Marathon swims.

On Sunday, July 26th, he covered the 10½-miles length of Lake

Windermere in 8 hours 56 minutes, and on August Monday he was among the eighteen starters who took part in the Welsh long-distance championships at Bala Lake, a trip of three miles each way.

The starters were all top-grade swimmers and six of them retired before completing the final distance. Bob finished tenth in 4 hours 27 minutes.

"It was quite rough for the first three miles" Bob said later, "but on the return journey the wind dropped. I am quite satisfied with the results I have achieved, but 13½ hours swimming in eight days is rather a lot".

Bob is a member of the British Long Distance Swimming Association.



Mr. Jack Kendrick

Elected Chairman

Congratulations to **Mr. Jack Kendrick**, foreman linesman at Knutsford, on becoming Chairman of the Knutsford Urban District Council for 1964/65. He has also been appointed a J.P. for his term of office.

Mr. Kendrick, who has been employed in the electricity industry in the Northwich District since 1925, has been a member of the Council for six years, and has served as Chairman of various sub-Committees.

School Appointments

Councillor R. Alfred Jones, clerk in the Board's Townyn Office and County Councillor **John Rees**, chargehand at Dolgellau, have been appointed respectively Chairman and Vice-Chairman of Towyn Grammar School.

The "field" takes the water at Bala.



1964 Photographic Competition

RULES

1. Entries may be concerned with any subject.
2. Each photograph submitted must be the original work and the copyright property of the person submitting it.
3. All photographs must have been taken since June 1st, 1963.
4. Any number of Black and White entries may be submitted, but only FIVE colour transparencies from each competitor.
5. Competitors must enclose a note with entries, stating clearly their name and address (either office or home) and the title of each picture and class entered.
6. The competition will be judged by an independent panel.
7. Closing date for the receipt of entries which must be addressed to: *The Editor, Contact, MANWEB, Love Lane, Liverpool 3*, will be **October 20th, 1964**.

Prizes of Premium Bonds will be awarded as follows:

BLACK AND WHITE PICTURES

Best Picture: FIVE Premium Bonds.

Best print measuring not more than six inches by four inches: THREE Premium Bonds.

COLOUR TRANSPARENCIES

1st—FIVE Premium Bonds.

2nd—THREE Premium Bonds.

3rd—TWO Premium Bonds.

Great care will be taken of entries, all of which will be returned. When submitting your photographs it is advisable to protect them during transmission by post by packing them with a piece of stout cardboard, slightly larger than the photographs themselves.